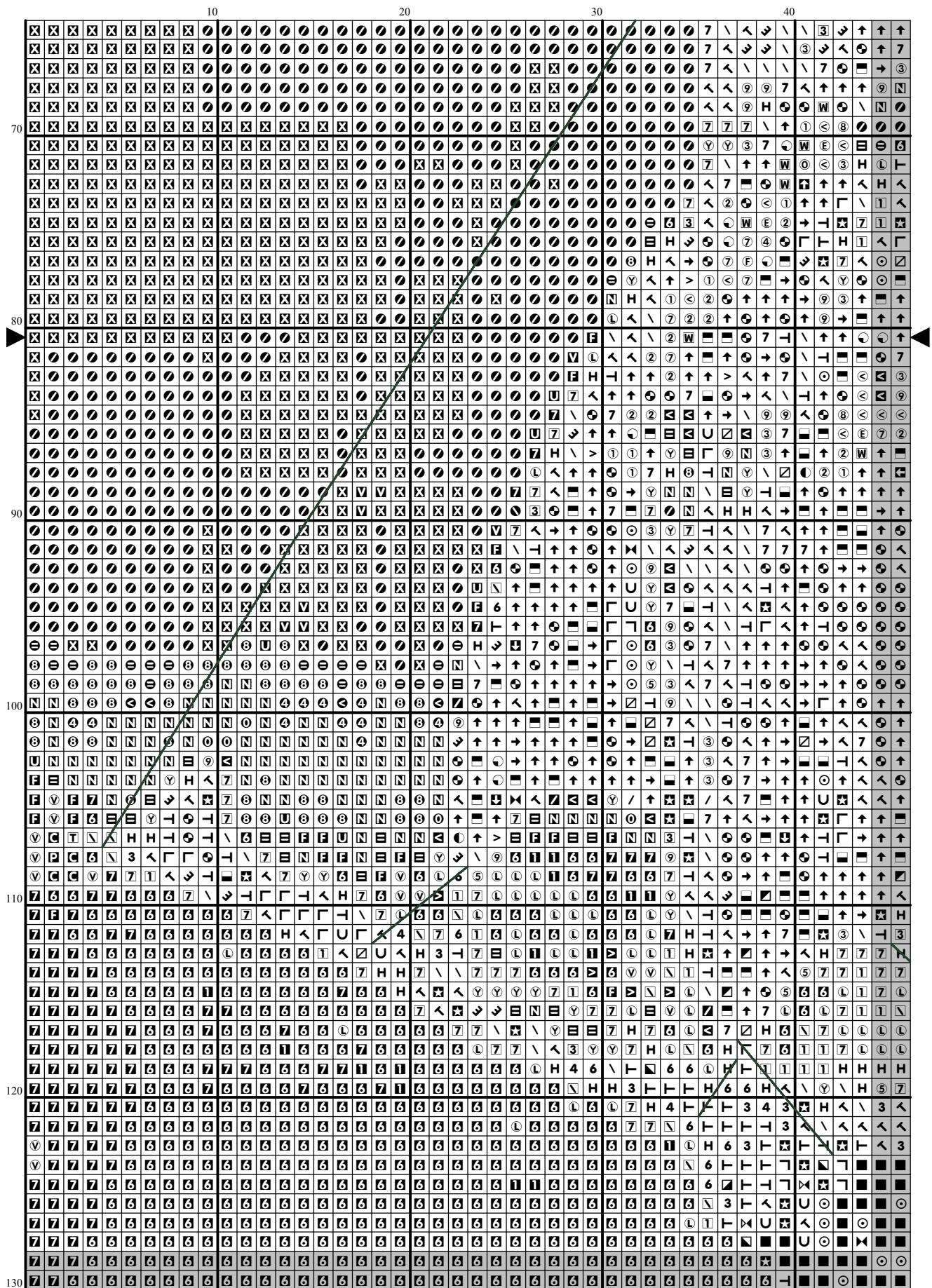
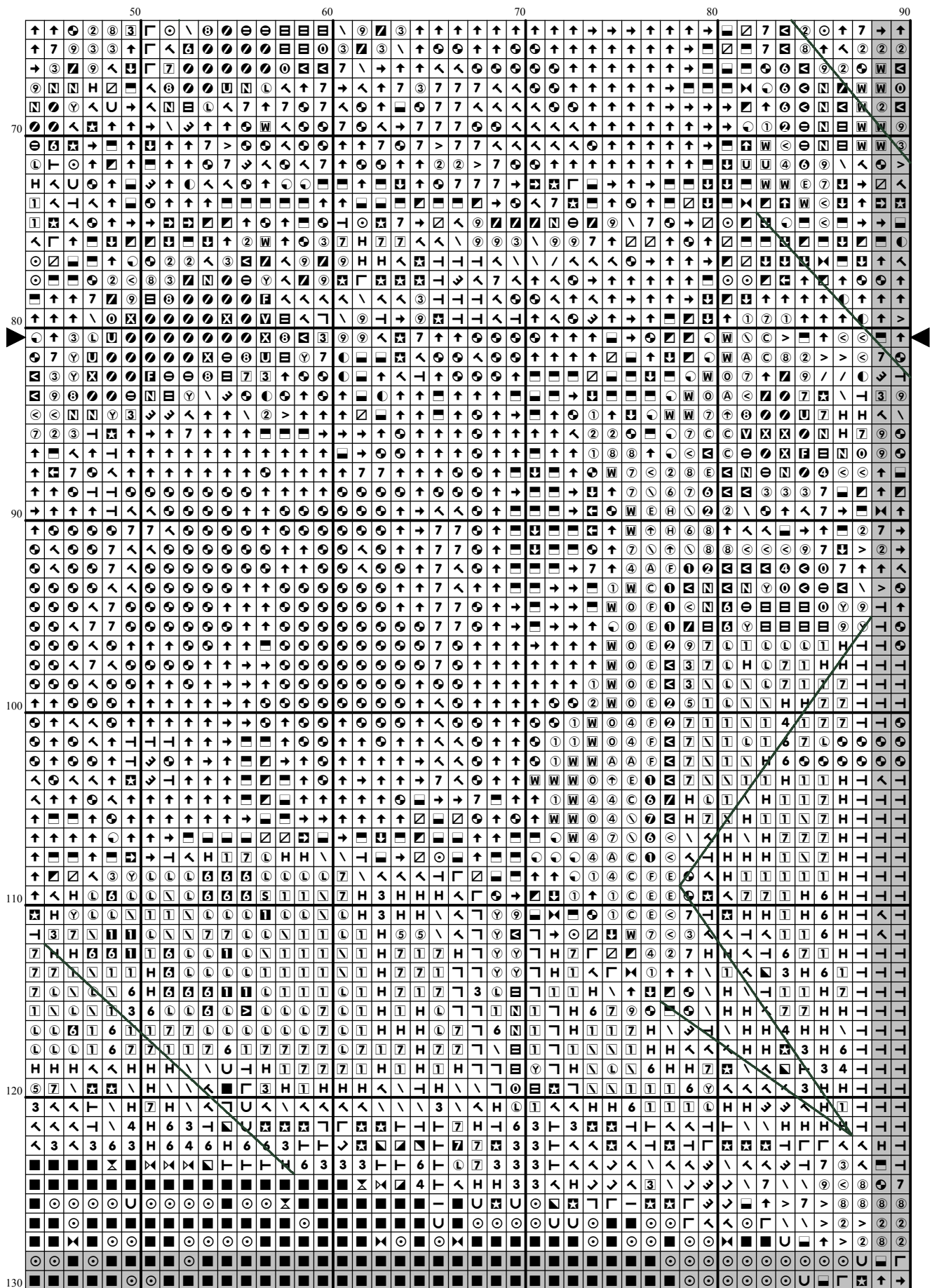
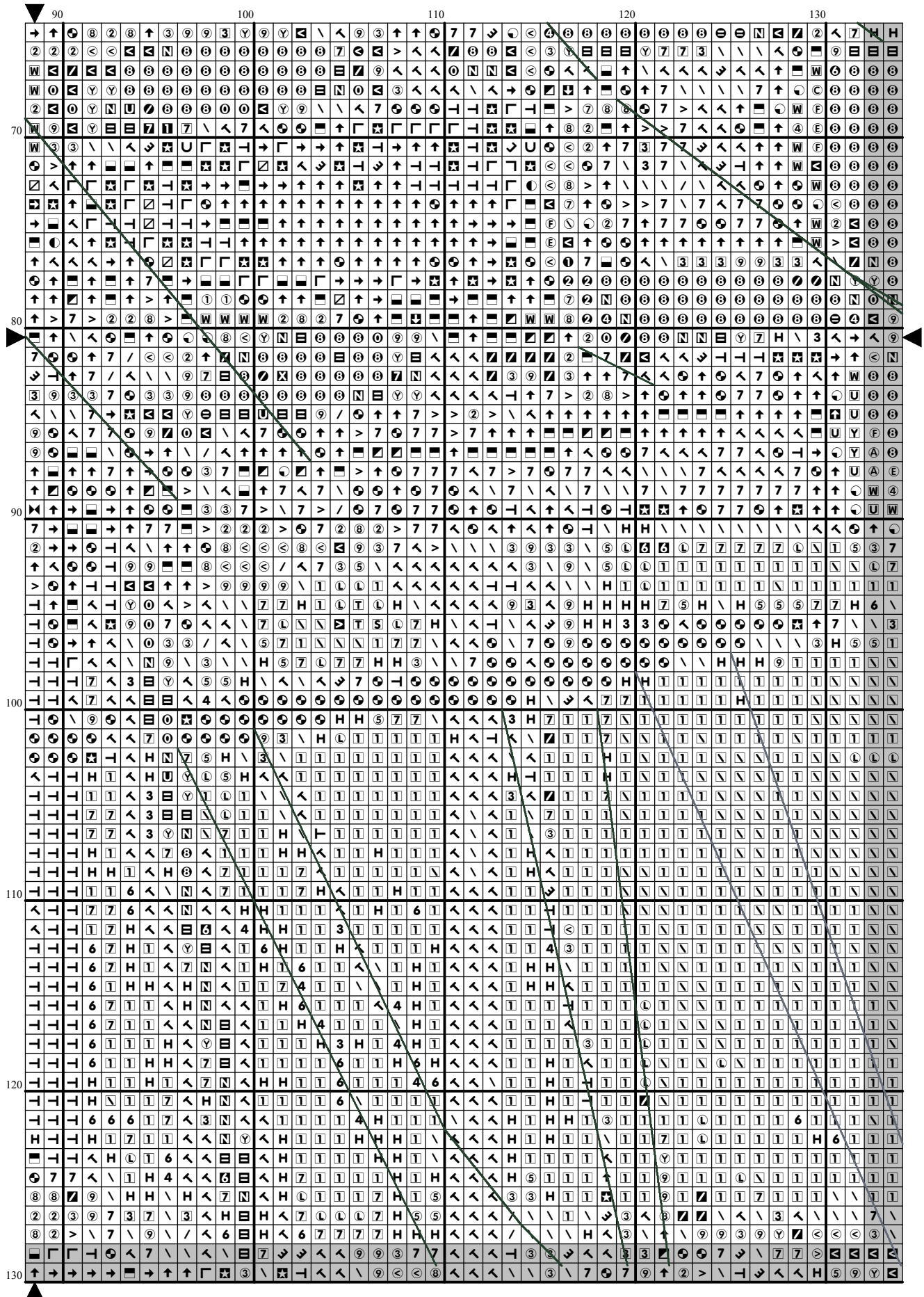
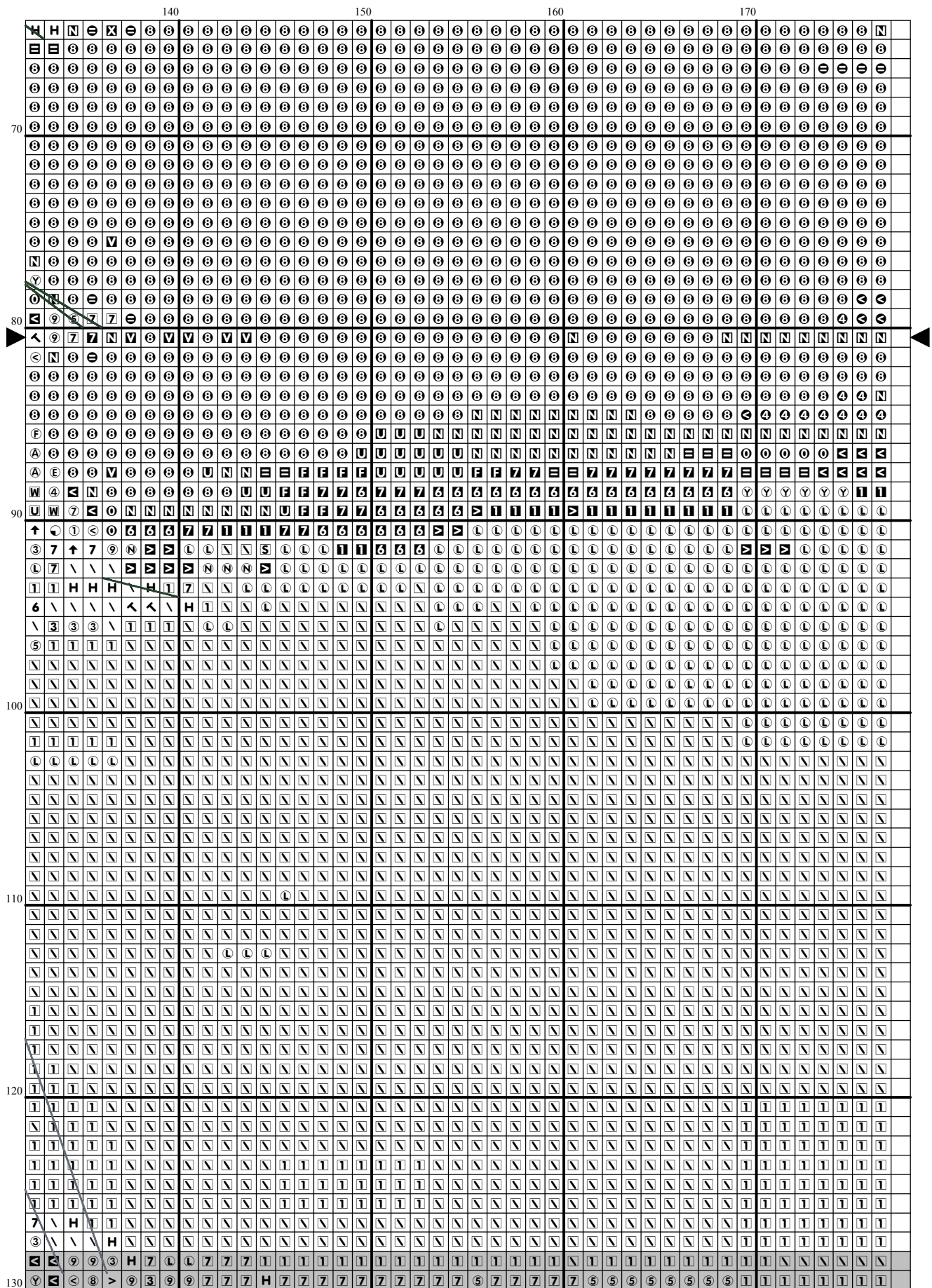


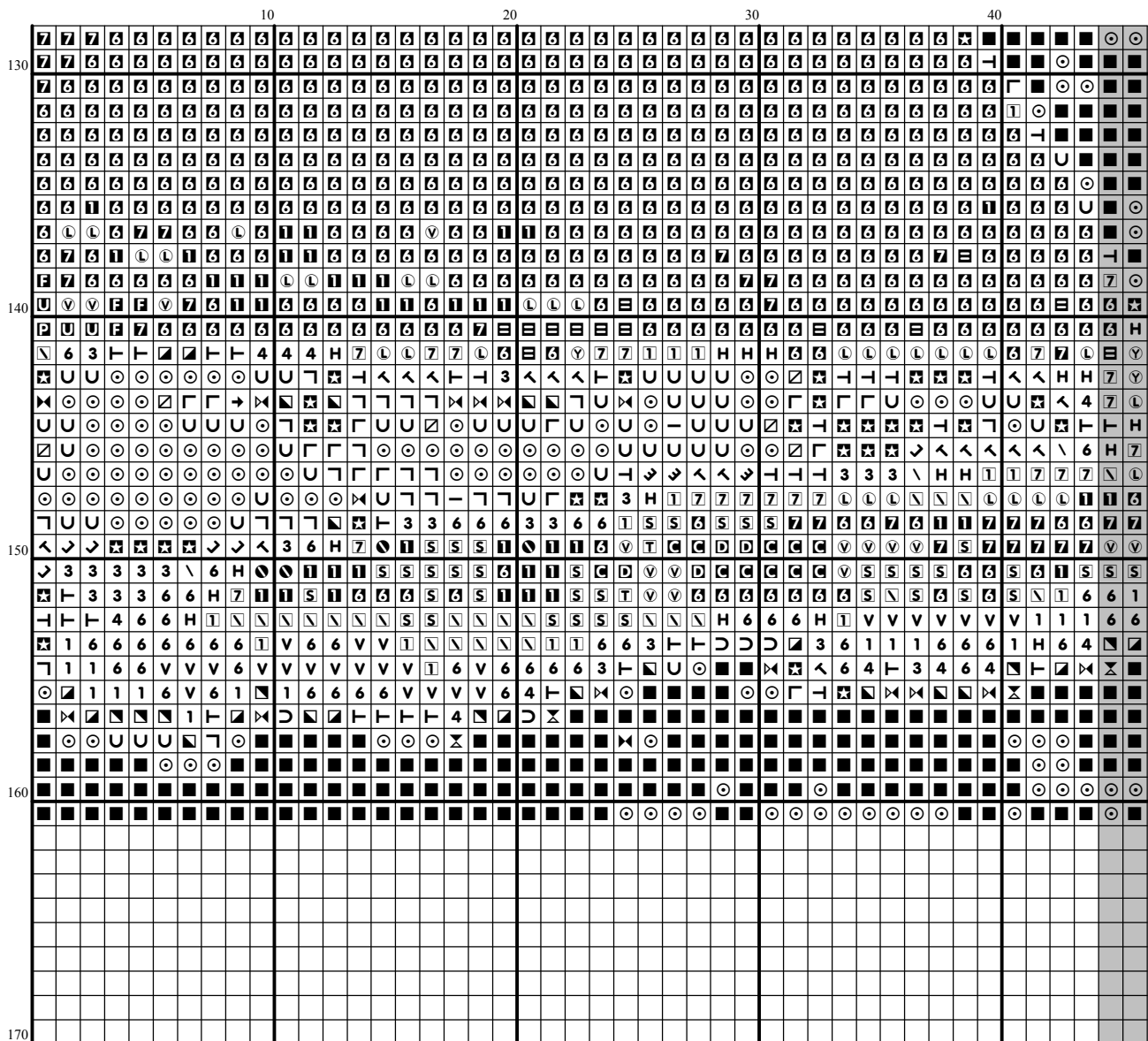
[illegible]

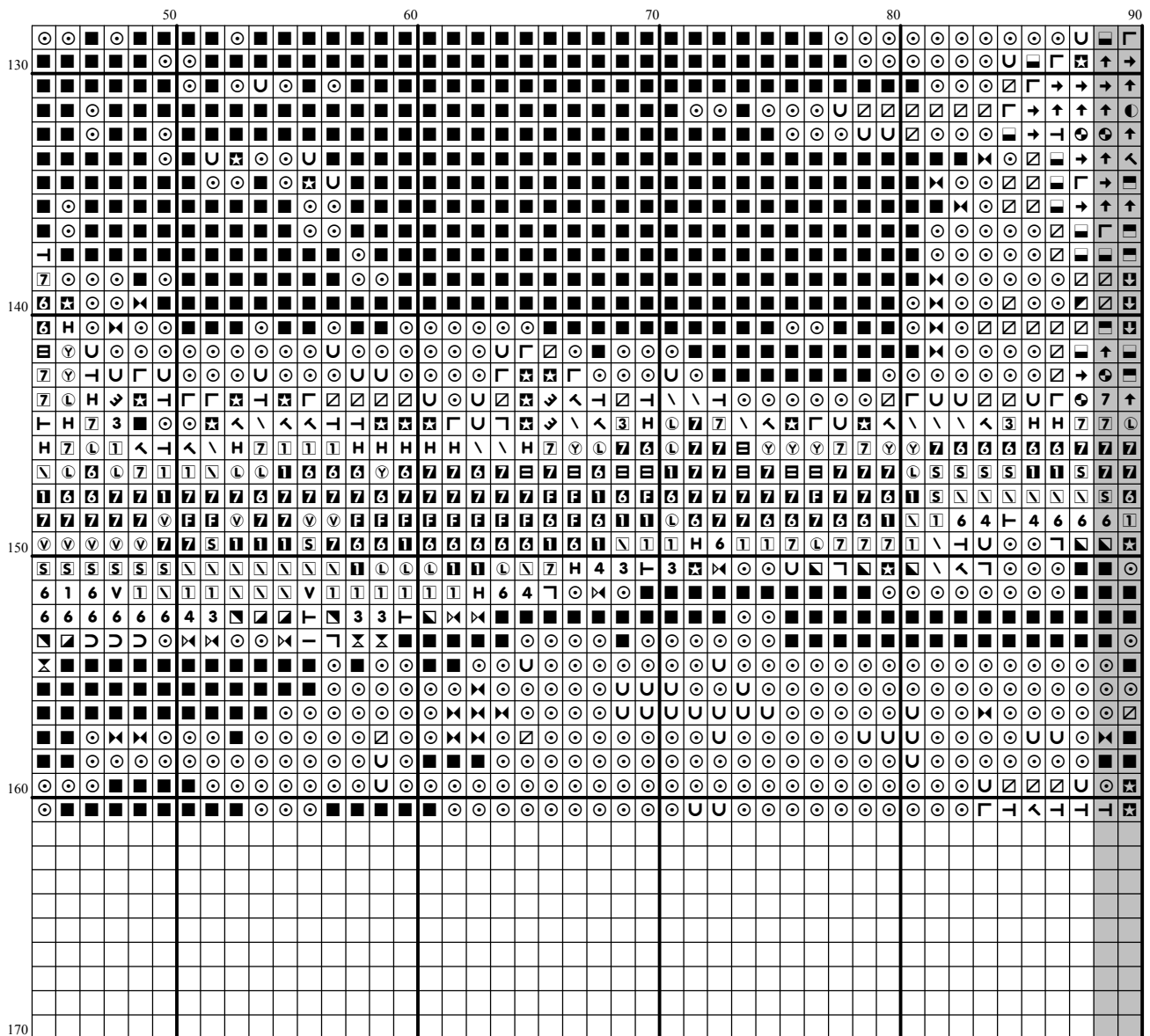


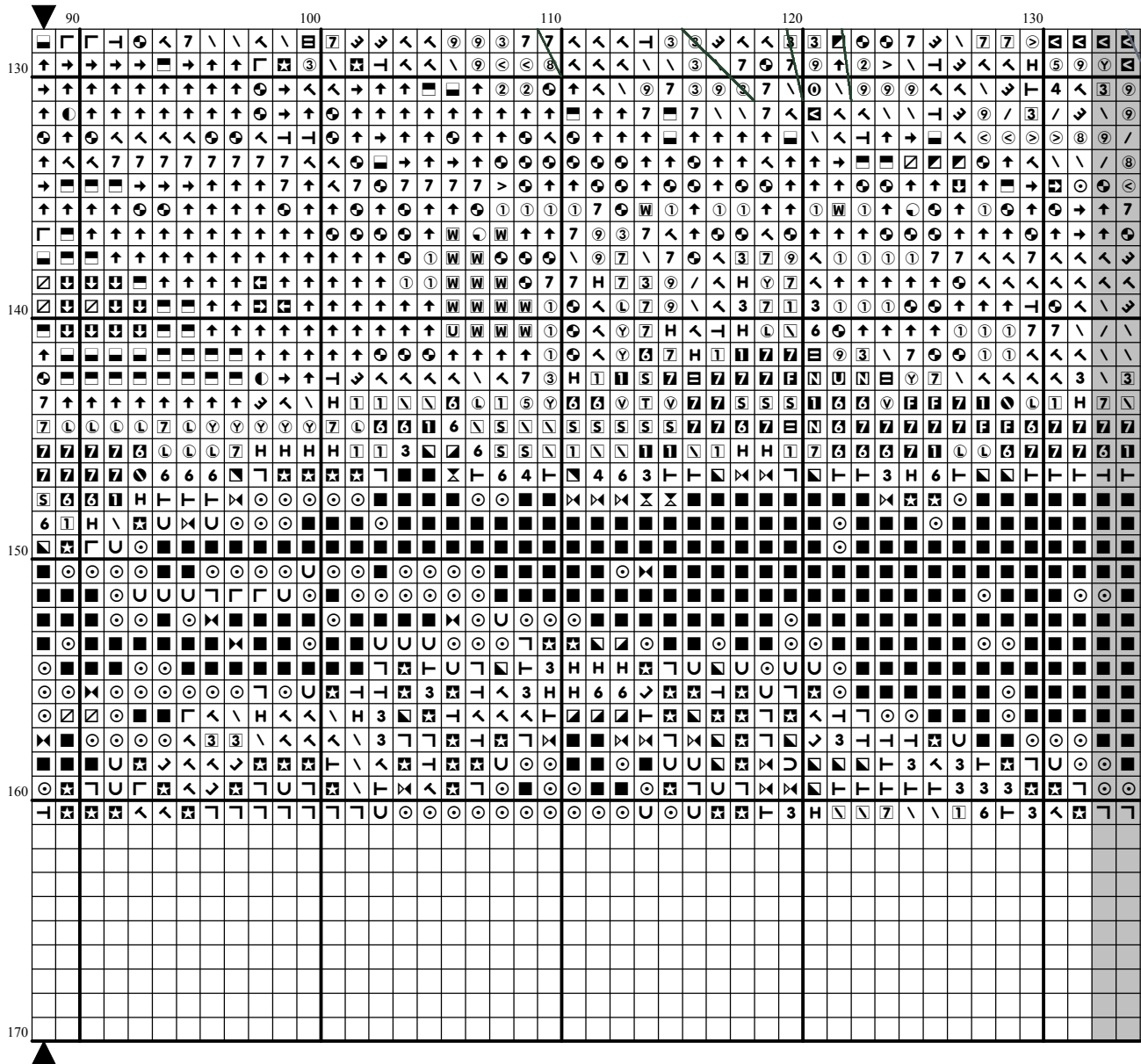


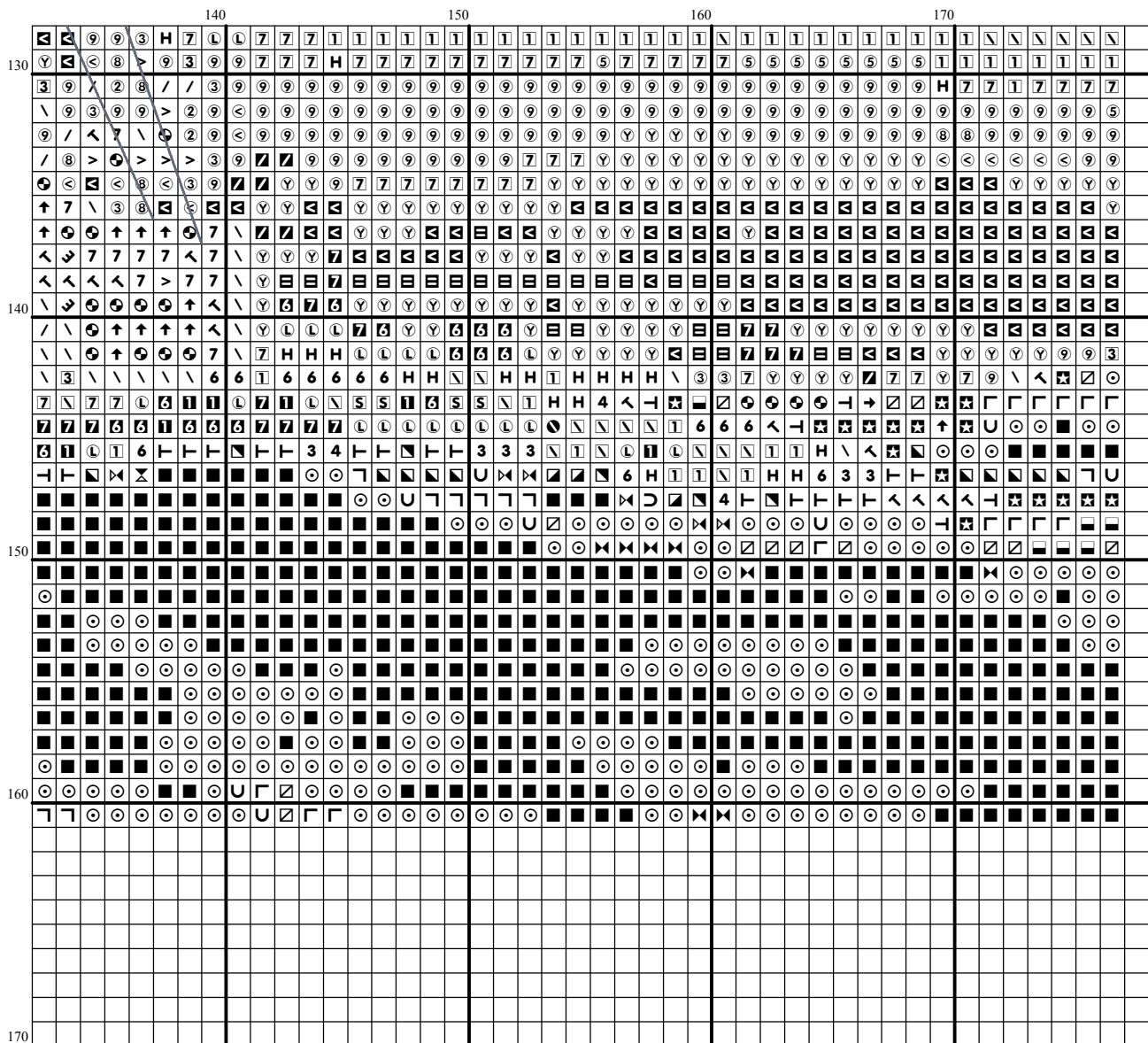












Instructions and Symbol Key for Design "Nav981 The Bereton"

Fabric: 14 count white Aida

Stitches: 177 x 161 **Size:** 12.64 x 11.50 inches or 32.11 x 29.21 cm



Colours: DMC

Use **2** strands of thread for cross stitch

Sym	No.	Colour Name	Sym	No.	Colour Name
⓪	159	Light blue grey	⓪	160	Storm blue
Ⓛ	162	Very light blue	Ⓛ	165	Pale moss green
Ⓜ	169	Pewter grey	■	310	Black
Ⓣ	317	Steel grey	Ⓣ	318	Granite grey
—	319	Shadow green	Ⓣ	341	Hydrangea blue
↘	367	Bay leaf green	②	371	Green plains
■	413	Iron grey	4	414	Lead grey
Ⓜ	415	Chrome grey	Ⓜ	420	Hazelnut
⓪	422	Light oak	⓪	437	Camel
⓪	453	Turtledove grey	3	502	Blue green
7	503	Thyme green	Ⓛ	520	Dark fern green
3	522	Trellis green	⓪	524	Light grey green
Ⓜ	535	Stone grey	Ⓜ	598	Lagoon turquoise
→	610	Dark golden brown	⓪	611	Sisal brown
⑧	612	String brown	⓪	613	Rope brown
Ⓜ	632	Cocoa	7	640	Green grey
③	642	Earth grey	Ⓜ	644	Light green grey
Ⓣ	645	Dark steel grey	Ⓜ	646	Platinum grey
Ⓜ	648	Pepper grey	Ⓜ	676	Savannah gold
⓪	677	Sand gold	⓪	680	Dark old gold
⓪	712	Cream	Ⓜ	729	Honey gold
■	730	Khaki green	Ⓜ	733	Golden green
Ⓜ	739	Dune cream	Ⓜ	747	Sea mist blue
Ⓜ	762	Pearl grey	Ⓜ	775	Summer rain blue
Ⓜ	780	Chestnut tree brown	Ⓜ	794	Baby blue
Ⓜ	800	Sky blue	Ⓜ	801	Mink brown
Ⓜ	822	Cotton cream	Ⓜ	823	Blueberry blue
Ⓜ	830	Green oak brown	Ⓜ	831	Green bronze
⑦	833	Brass	Ⓜ	834	Light brass
Ⓜ	839	Root brown	①	840	Hare brown
Ⓜ	898	Teak brown	Ⓜ	924	Dark pearl green
6	926	Grey green	Ⓜ	927	Oyster grey
Ⓜ	928	Light pearl grey	Ⓜ	930	Slate grey
1	931	Blue grey	Ⓜ	932	Seagull blue
Ⓜ	934	Algae green	Ⓜ	935	Undergrowth green
■	936	Oaktree moss green	Ⓜ	937	Moss green
Ⓜ	938	Espresso brown	Ⓜ	975	Chestnut brown
Ⓜ	977	Caramel brown	↑	3011	Artichoke green
>	3012	Marsh green	Ⓜ	3013	Resin green
Ⓜ	3021	Cliff grey	Ⓜ	3022	Elephant grey
⑨	3023	Light platinum grey	⑤	3042	Lilac
Ⓜ	3046	Rye beige	Ⓜ	3047	Silver birch beige
/	3052	Silver green	Ⓜ	3072	Pale pearl grey
Ⓜ	3325	Azur blue	Ⓜ	3362	Fig tree green
↘	3363	Herb green	Ⓜ	3752	Light porcelain blue
Ⓜ	3753	Moonlight blue	Ⓜ	3756	Cloud blue
Ⓜ	3761	Light Sky Blue	Ⓜ	3768	Storm grey
Ⓜ	3799	Anthracite grey	Ⓜ	3813	Light green

●	3817	Polar tree green	●	3823	Ivory
Y	3826	Golden brown	④	3828	Oaktree brown
T	3840	Light lavender blue	■	3841	Igloo blue
⊙	ECRUT	ECRUT			

Use **1** strands of thread for backstitch

	DMC 319	Shadow green
	DMC 414	Lead grey

This chart has been designed and printed with our best intentions of being without mistakes. However, the possibility of human error, printing mistakes or the variation of individual stitching does exist, and we regret that we cannot be responsible for this.

Note: The shaded blocks on the chart represent overlapping stitches.
 Copyright © Classic Cross Stitch 2004 All rights reserved.